

One Health-Social Sciences Launch Meeting

January 8, 2018

Engaging Social Scientists in
the One Health Concept Through
Collaborations that
'Connect, Create and Educate'



Welcome

**Cheryl Stroud, DVM, PhD
Executive Director
One Health Commission**



Agenda

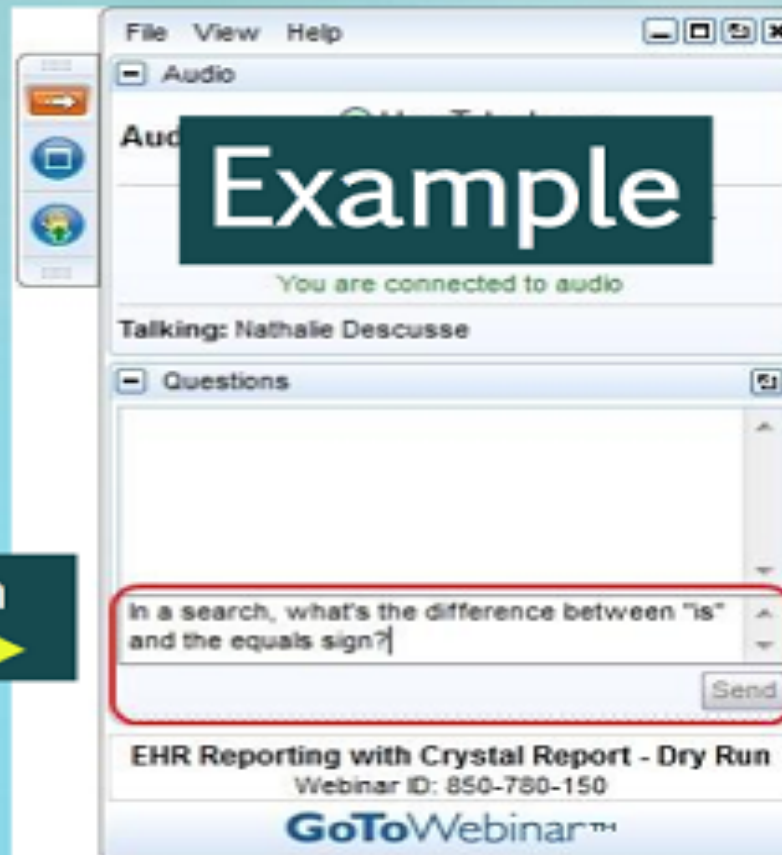


Cheryl Stroud, DVM, PhD
Executive Director
One Health Commission



TIME	AGENDA ITEM	DISCUSSION
11:00	Welcome	<i>OH-SS and the OHC mission</i>
11:10	Introductions	<i>Who are we?</i> Questionnaire responses
11:20	Why is this important?	<i>Why work together?</i>
11:30	Comments /Questions	Facilitated discussion
11:50	Next steps	<ul style="list-style-type: none">• Second Mondays• LinkedIn Communication forum• OH-SS Survey for priority setting and common language
12:00	Adjourn	

Asking Questions



Type your question
here →



Technology





Why the One Health Commission believes it is important to bring the Social Sciences into the One Health Movement



Ego



Nature



“A lot of people have this ego need that makes them want to believe that Earth is the centre of the universe and humans are the most important species, the supreme expression of creation.” - Ann Druyan

<https://www.brainyquote.com/quotes/quotes/a/anndruyan362153.html>





<http://magazine.good.is/slideshows/human-impact-environment#0>

Project Purpose

Address perhaps the most
important social problem of our time:
*‘how to change the way humans relate
to the planet and each other to ensure
a more sustainable future
for all life.’*



Project Goals

- To advance the "One Health" agenda
beyond the theoretical to the practical
- To Raise awareness about the social determinants of human-animal-environment interactions, and
- To bring much-needed attention to the policy and operational issues that ultimately determine the impact and success of needed cross-sectoral efforts.





Ray of Hope for the Future

<http://www.paneuropeannetworks.com/science-technology/one-health-a-ray-of-hope/>

One Health is like an Orchestra

A single musician cannot play a full symphony alone. It takes all the musicians working together to make beautiful music.



See opening video of the 2013 Prince Mahidol Award Conference in Thailand [https://goo.gl/](https://goo.gl/zBA2nr)

[zBA2nr](https://goo.gl/zBA2nr)



One Health provides a pathway to Planetary Health and to C

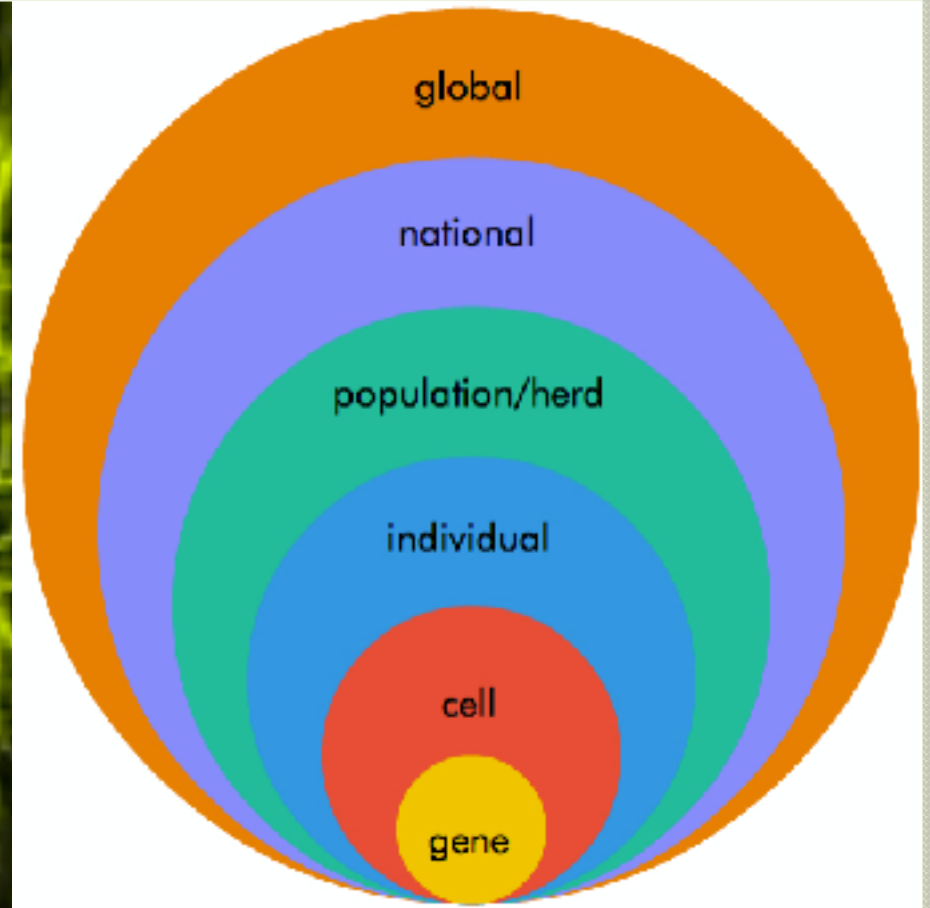
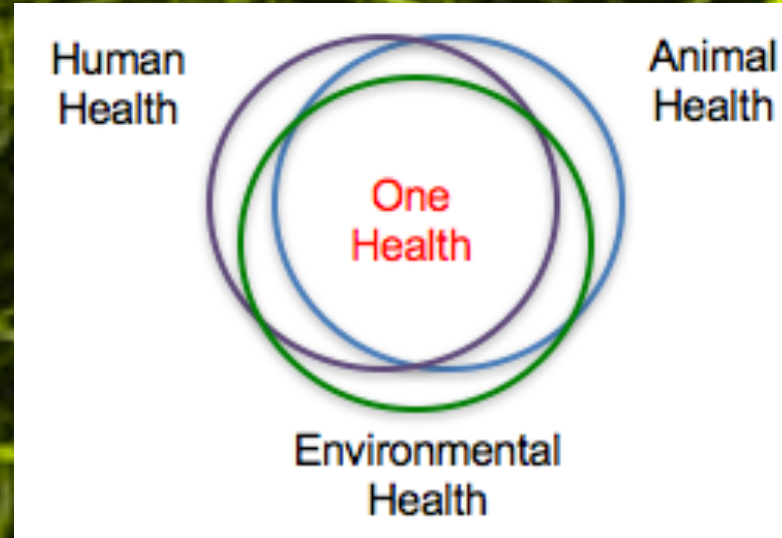


Collaborations start with *Relationships!!*

*Which start when we
come together in direct conversations*



“Population health science is the study of the conditions that shape distributions of health within and across populations, and of the mechanisms through which these conditions manifest as the health of individuals.”



Laura C. Streichert, PhD, MPH

Population Health Consultant
Co-Chair One Health-Social Sciences

OH-SS Teambuilding

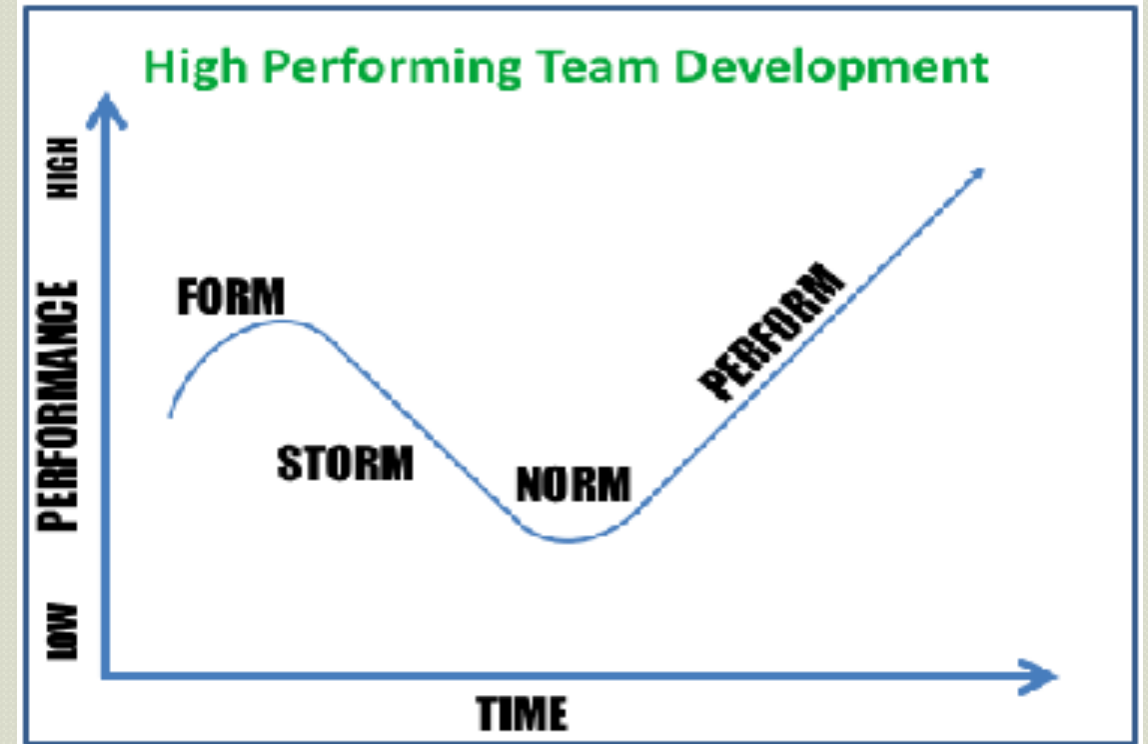
This is an opportunity for a new model for interdisciplinary collaboration and dissemination science.

Response

- > 40 responses
- > 20 countries

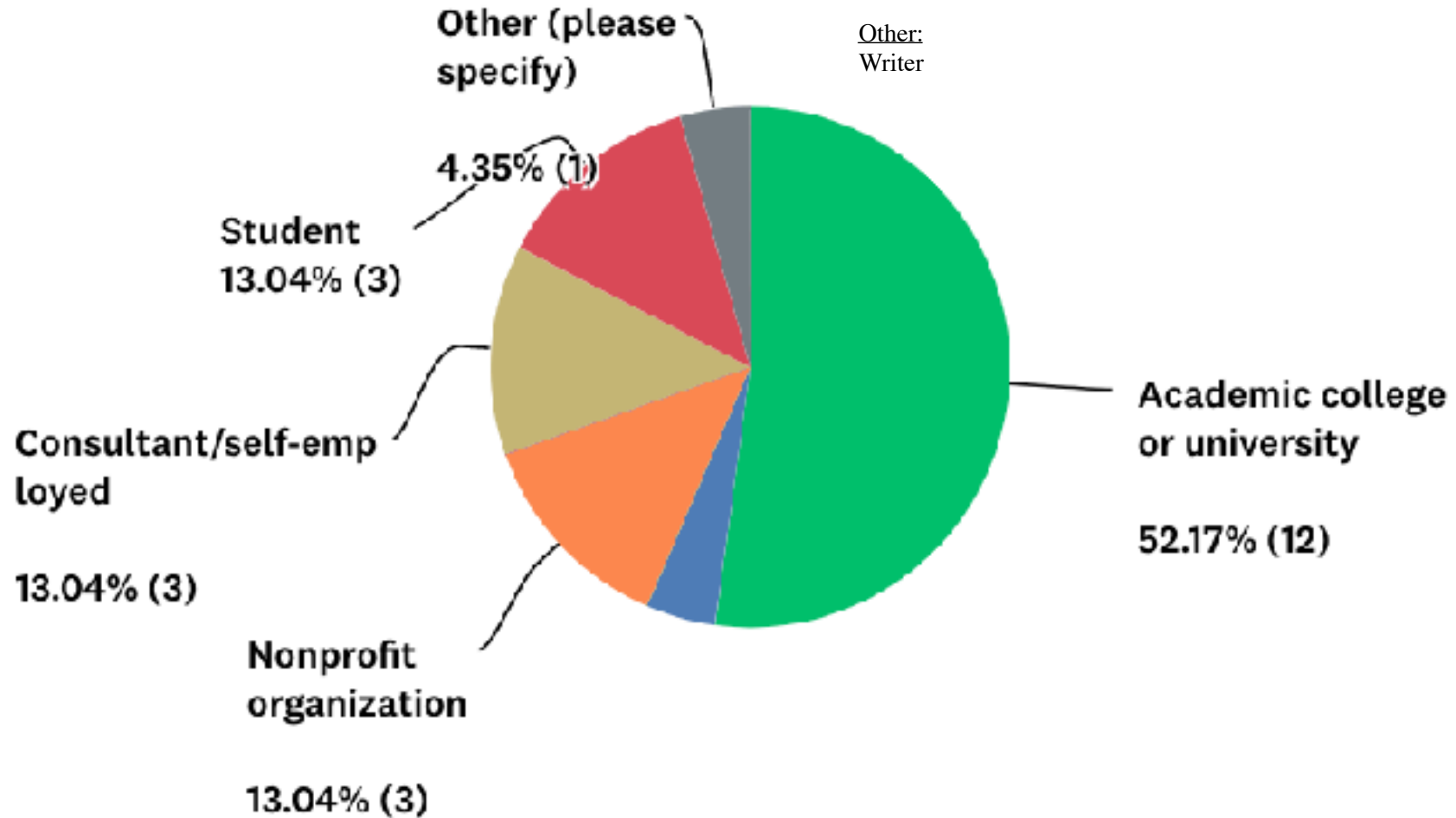
Leadership:

- Co-Chairs
- Other opportunities

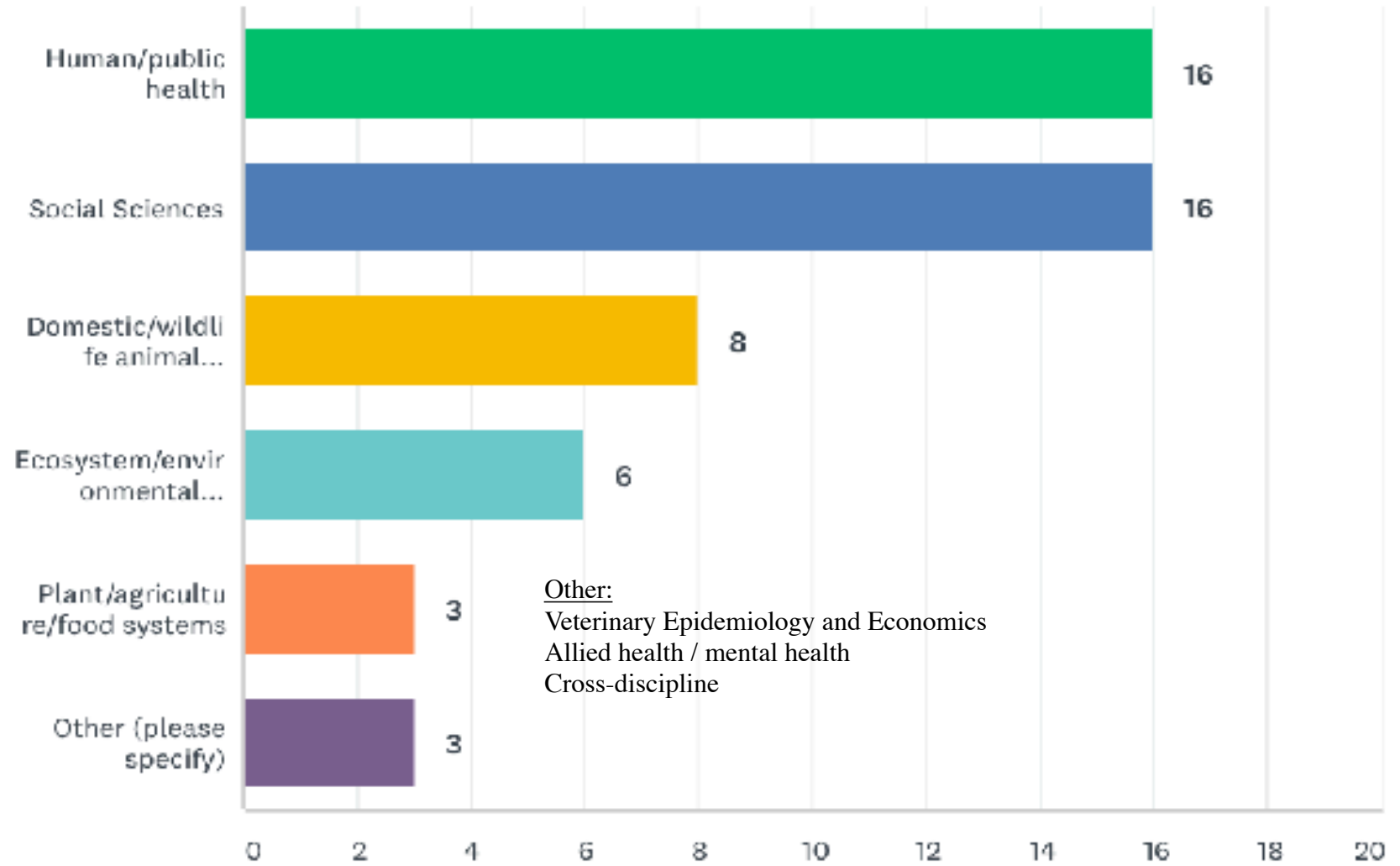


Stages of Development of high performing teams
Bruce Tuckman

OH-SS: Sectors



OH-SS: Disciplines*



* Mark all that apply

Disciplines of the Social Sciences represented:

- Anthropology
- Anthropology (Medical, cultural)
- Civics
- Critical Theory
- Mental health worker as psychotherapists or counselors
- Participatory Epizootiology and Economics
- Political Science/Public Administration, Sociology, Social work and administration
- Psychology and public health
- Sociology (Medical Sociology)
- Sociology, international relations, global governance, management, integrated data ecosystems



Why is the integration of social sciences and One Health important to you?



**Lisa M. Webb,
D.Psy, MPH, MBA**

Co-Chair

One Health and Social Sciences



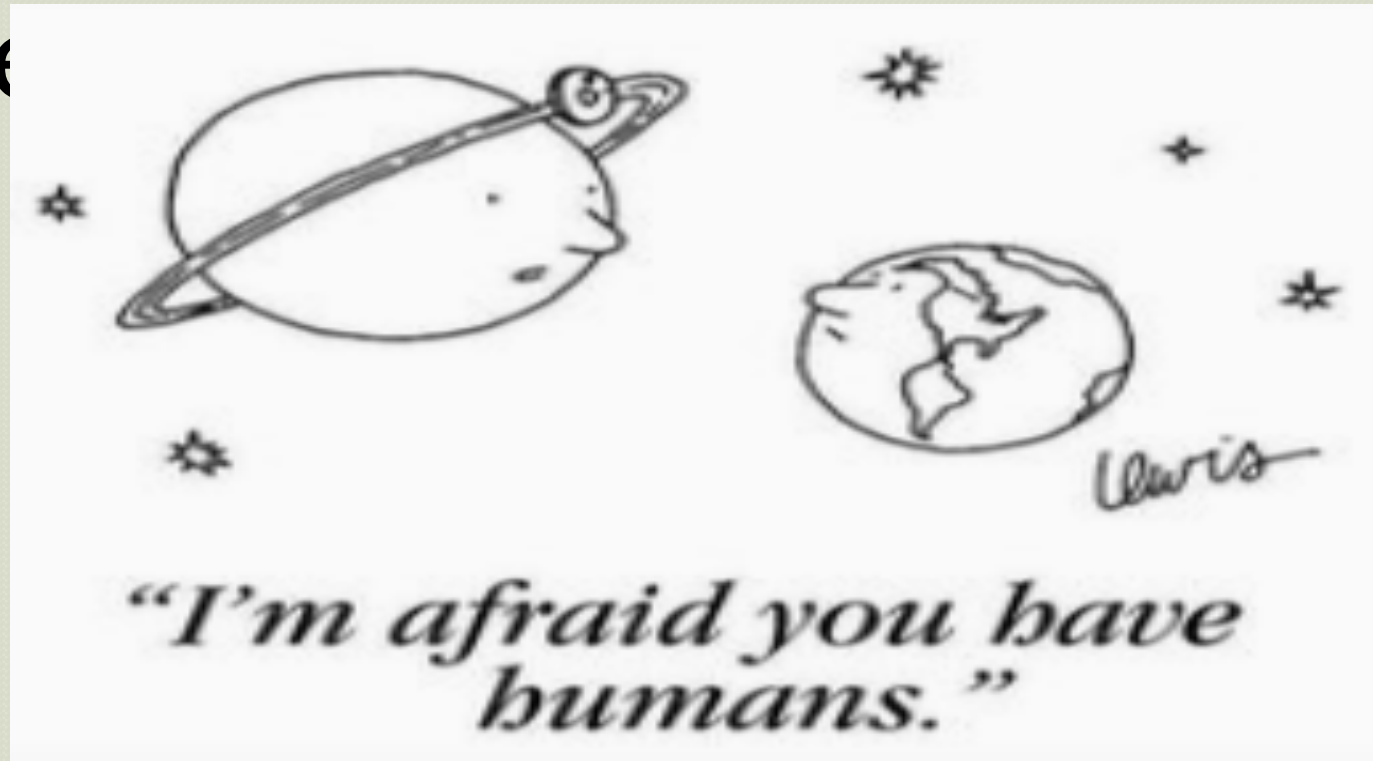
Question to consider:

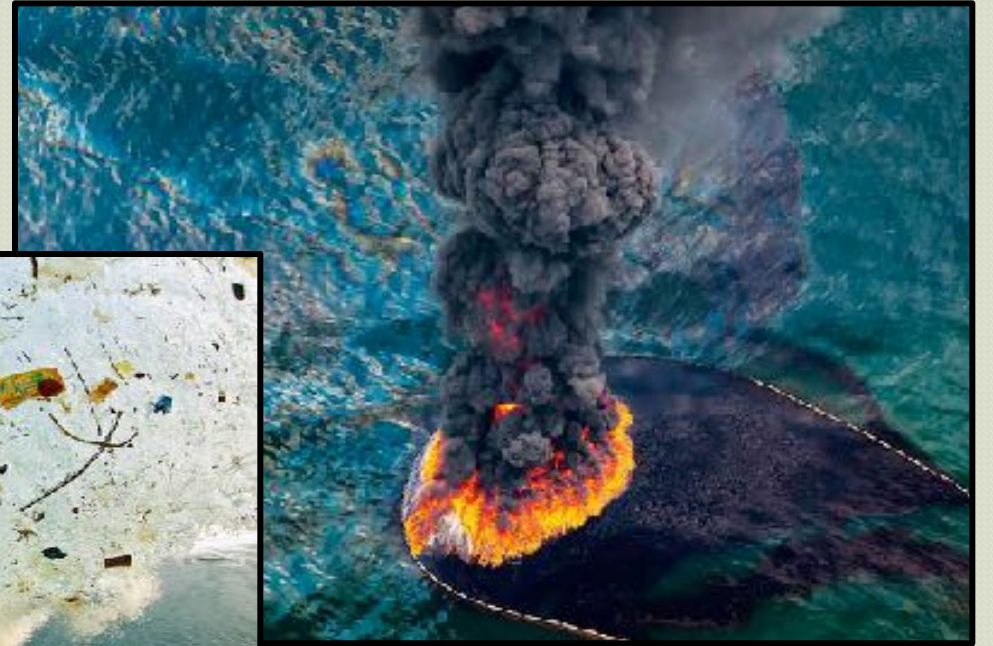
What do HIV+ status and cheetah conservation have in common?



Why OH-SS is important

The work of social scientists has improved our understanding of the diverse impacts of human-caused c



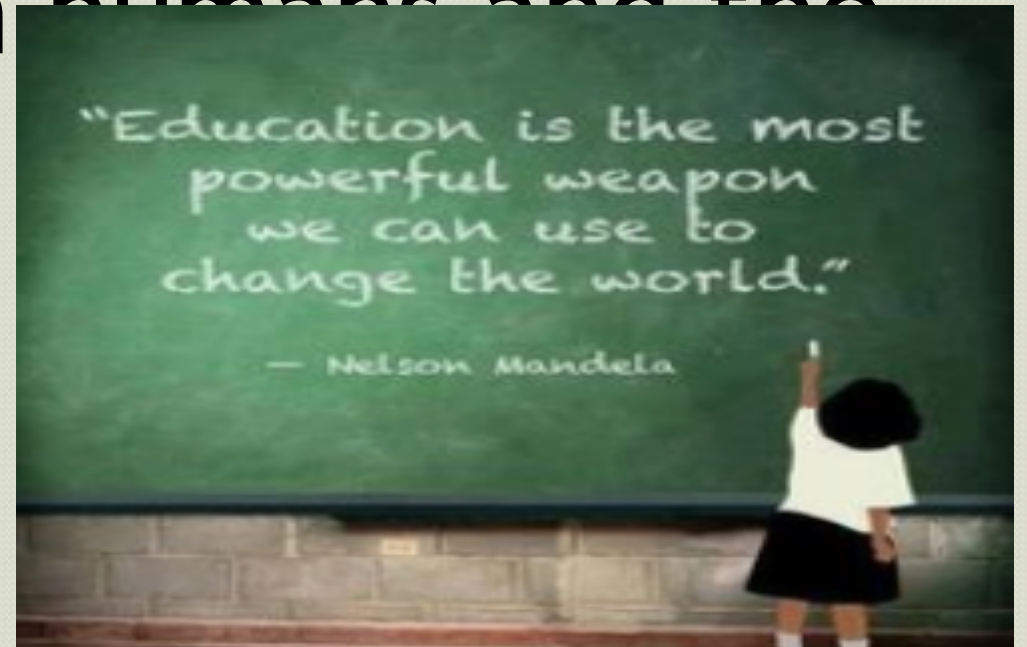


People are often unconscious of the impact of human perceptions, attitudes, and especially behavior on environmental well-being.

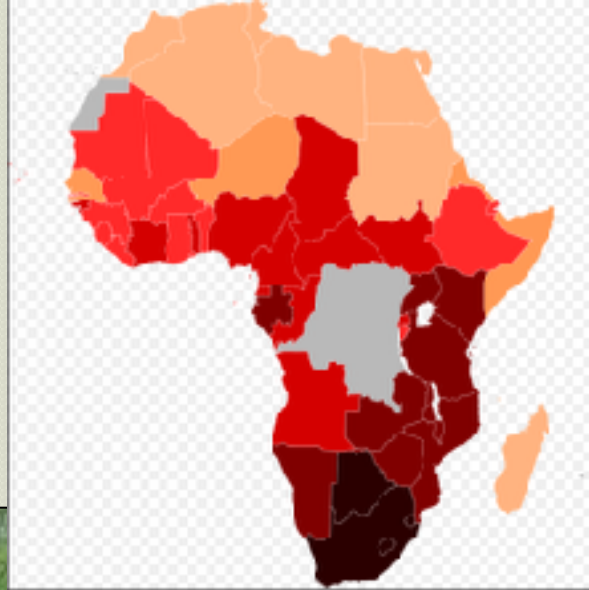


Conservation and Environmental Psychology

- Values human and ecosystem health
- Aspires to enhance the healthy relationships between humans and the rest of nature



Revisiting our question: What do HIV+ status and cheetah conservation have in common?



Anthropology and Psychology

© MARK ANDERSON, ALL RIGHTS RESERVED

WWW.ANDERSTOONS.COM

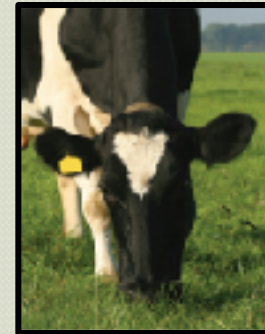


"We've got our work cut out for us, which is great!"





Jennifer A. Ida, MA
PhD Student
Faculty of Veterinary Medicine
University of Calgary
Co-chair
One Health-Social Sciences Team

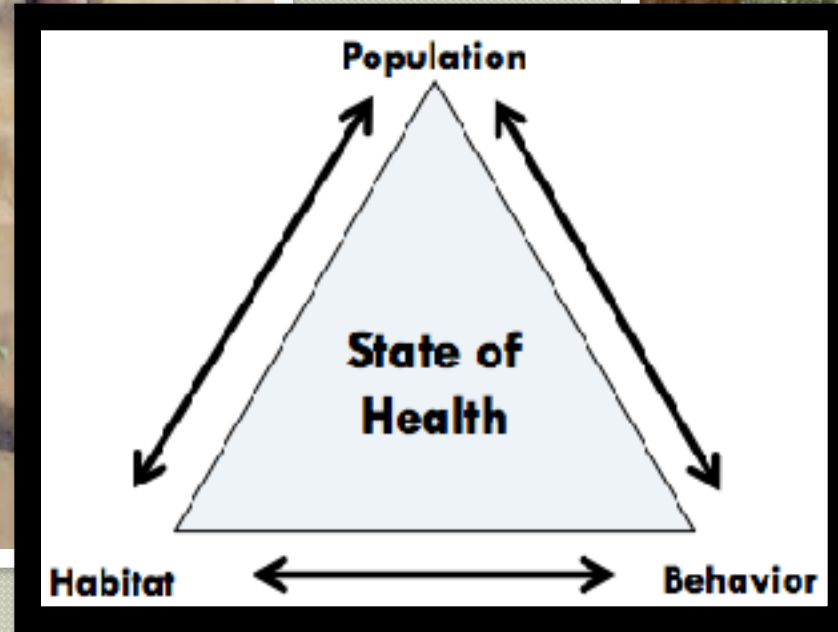




BA: Anthropology

Biocultural focus: animals, culture, and disease
Cultural construction of human-primate interactions
Cross-species herpes B transmission
Ethnographic and primatological methods



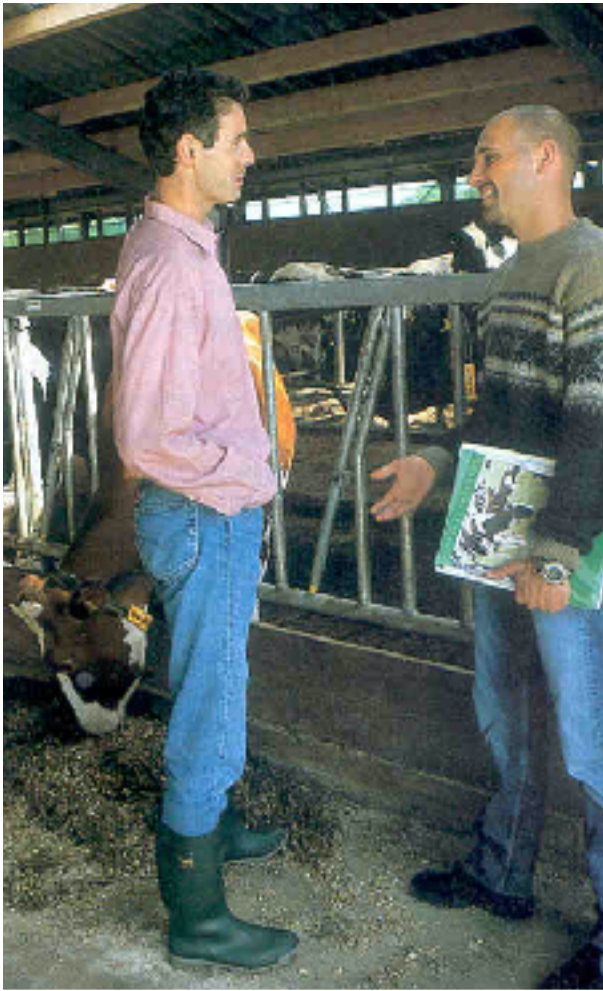


Adapted from Meade and Emch, 2010

MA: Anthropology, NSF GRFP

Biocultural landscape of zoonotic disease
Human-livestock vulnerability to anthrax
Indigenous and non-indigenous communities
Local context





**PhD Student:
Veterinary Medical Sciences**

Integration of anthropology and veterinary medicine
Antimicrobial use in the dairy industry
Veterinarian-farmer relationships
Interactions, influence, and power of key stakeholders
Culture of veterinary institutions



One Health: What's missing?



Importance of OH-SS integration: your thoughts

“One Health as an intervention research concept also needs an analysis of interactions between actors of the health system for better decision-making.”

“The determinants of human, animal and ecosystem health are closely related to human action and behavior. To make advances in One Health, we need to engage those who can help us understand those connections.”

“...the effect of culture on the intersection of human health and animal health is immense and needs to be an essential component of this interdisciplinary effort.”



Importance of OH-SS integration: your thoughts

“Because you can’t isolate the lifecycle of a parasite from it(s) hosts and its environment, natural as well as cultural. To face and understand complexity such as HEALTH and how the three OH pillars interact with each another, you can’t do [that] without the integration of the social sciences.”

We know plenty about people and the way that stories influence human behavior. We need to put this knowledge to work to show people the continuities between our bodies and the natural world. We need to be better storytellers.

“...but the funding and inclusion of social scientists continually seems to be overlooked (veterinary researchers seem to feel that they know all there is to know about ‘people issues’) and therefore I feel that there is a lack of respect or appreciation for what social science can bring to the field that we need to address/advocate for...”



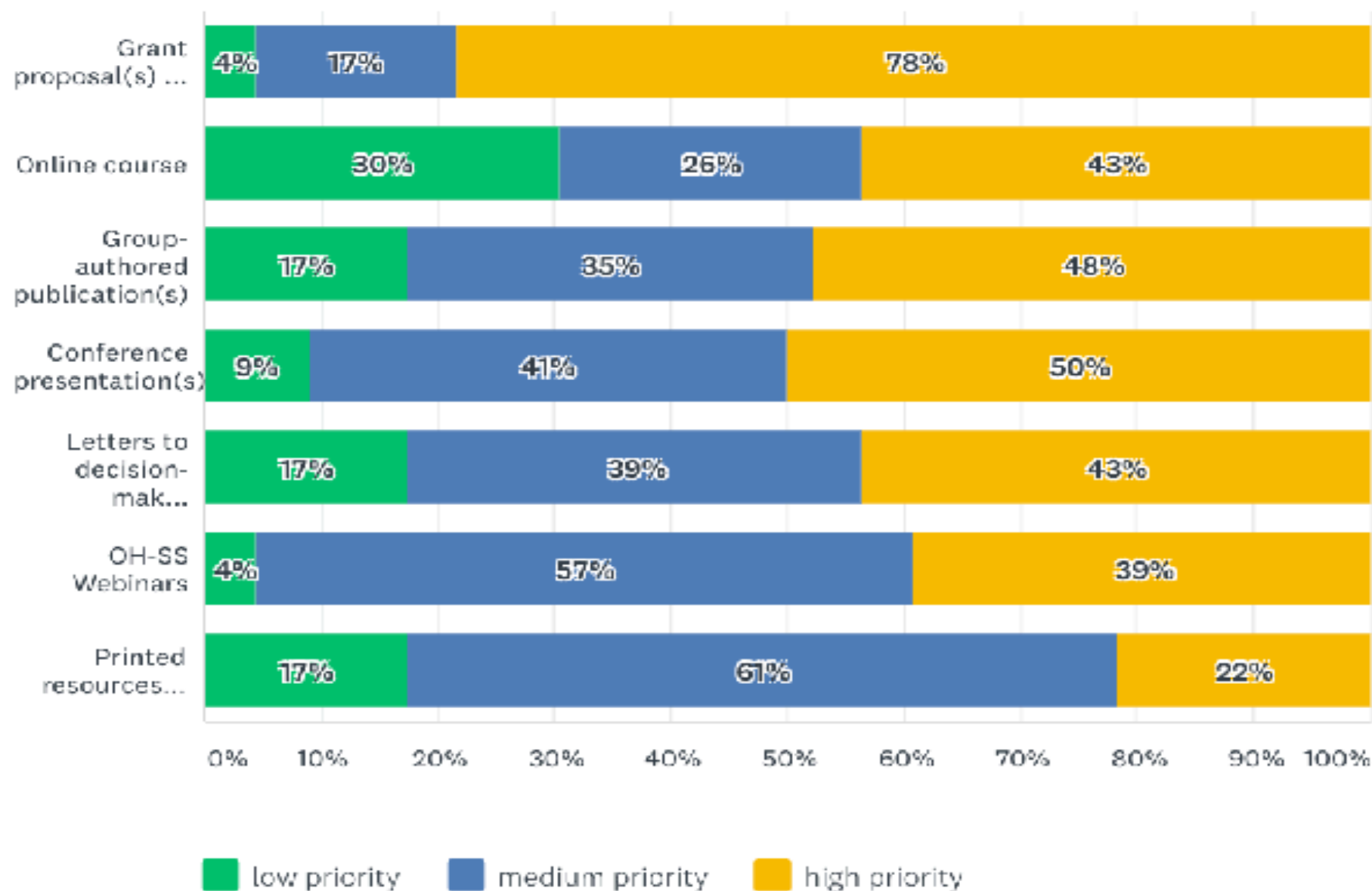
Facilitated Open Discussion

Why is the integration of social sciences and One Health important to you?

Raise your hand or type in your question



Next Steps: Prioritizing



Next Steps

OH-SS Launch questionnaire response:

“Conditions are URGENT. We have to be activist. Simply producing conferences and papers is no longer enough. We have to speak to people, not just to PhDs. We have to get out of the academic box and become activist leaders for One Health.”



Comments/Additional suggestions:

- Role of media. -Mentorship classes.
- Dissemination of social science perspectives to traditional scientists.
- Integrated data ecosystems for showing linkages and other evidence for One Health issues related to policy and program implementation and social impact
- Advocating for the inclusion of social scientists in one health. Providing case studies/examples of how we can add value. Considering 'One welfare' vs. 'One Health'
- Participatory Disease Search/Disease Surveillance
- Can we form a group of scholars who can help to the new budding professionals/ government employees to conduct operational one health research in LMICs.



Collaborations start with *Relationships!!*

*Which start when we
come together in direct conversations*





Dream the Future!
A new way of thinking

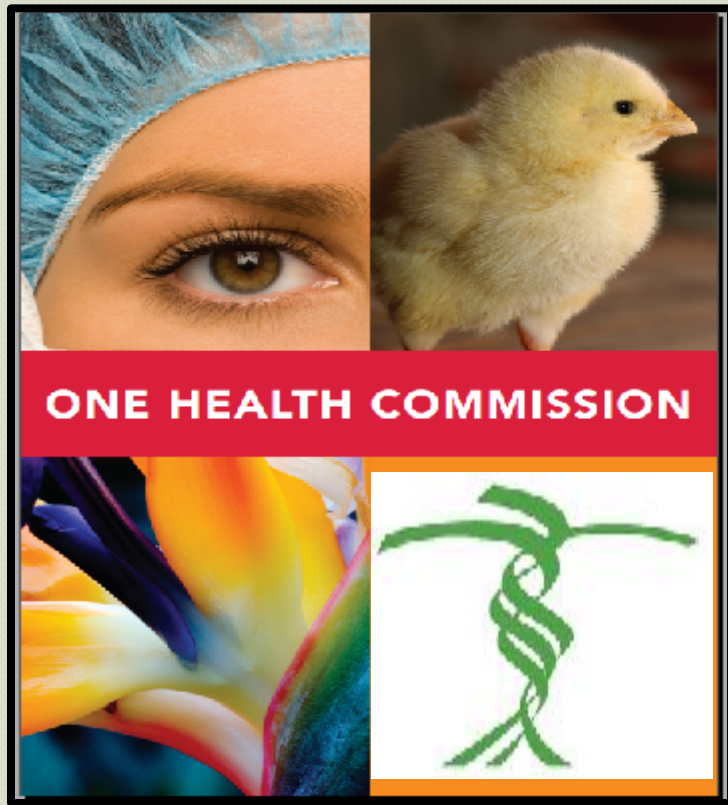
Next Steps - Form sub-groups

Next Meeting
February 12, 2018,

Bridge the Silos!



Dream the Future



“It’s Up to US”!!
the One Health Stakeholders, to make
One Health the default way of doing
business around the world!!

